

ABEC 3 and MAX type Bearings



Enduro ABEC 3 Bearings	Static Capacity	Weight Grams	Dimensions IDxODxWidth	Enduro MAX Bearings	Static Capacity	Weight Grams	Dimensions IDxODxWidth	Notes
	(lbs)				(lbs)			
MR 104 2RS	32	0.9	4 x 10 x 3					
MR 105 2RS	28	0.9	5 x 10 x 4					"2RS" generic for 2
685 2RS	47	1.8	5 x 11 x 5					Rubber Seals one on each
695 2RS	65	2.5	5 x 13 x 4					side. The Enduro Bearing
605 2RS	114	3.5	5 x 14 x 5	605 2RS MAX	156	3.6	5 x 14 x 5	seals w/ marked "LLB" or
686 2RS	75	3.6	6 x 13 x 5					"LLU" which indicates
696 2RS	92	3.7	6 x 15 x 5					more accurately the
MR 616 2RS	98	4.7	6 x 16 x 5					specific seal design.
606 2RS	158	5.7	6 x 17 x 6					
626 2RS	191	7.5	6 x 19 x 6					"LLB" is a double-lip type
MR 137 2RS	145	7.1	7 x 13 x 4					seal making light contact,
607 2RS	205	7.4	7 x 19 x 6					and also rides in a groove
688 2RS	135	3.7	8 x 16 x 5	688 2RS MAX	210	3.9	8 x 16 x 5	making a labrinth seal
698 2RS	165	6.7	8 x 19 x 6	698 2RS MAX	230	7.1	8 x 19 x 6	
608 2RS	315	11.2	8 x 22 x 7	608 2RS MAX	504	11.6	8 x 22 x 7	"LLU" is a double-lip type
689 2RS	184	6.7	9 x 17 x 4	689 2RS MAX	248	7.0	9 x 17 x 4	seal making medium
699 2RS	225	7.1	9 x 20 x 6					contact, and also rides in

ABEC 3 and MAX type Bearings

609 2RS	580	13.7	9 x 24 x 7						a groove making a
629 2RS	490	18.7	9 x 26 x 8						labrinth seal
6700 2RS	84	2.0	10 x 15 x 4						
6800 2RS	172	4.9	10 x 19 x 5	6800 2RS MAX	260	5.1	10 x 19 x 5		The Enduro bearings are
63800 2RS	172	6.8	10 x 19 x 7	63800 2RS MAX	260	7.1	10 x 19 x 7		all ABEC 3 level precision
6900 2RS	303	9.4	10 x 22 x 6	6900 2RS MAX	485	9.5	10 x 22 x 6		
6000 2RS	438	18.7	10 x 26 x 8	6000 2RS MAX	701	19.3	10 x 26 x 8		
16100 2RS	441	21.3	10 x 28 x 8						"MAX" Type bearings have
6200 2RS	500	31.1	10 x 30 x 9						no retainer and a fill slot
6701 2RS	95	2.7	12 x 18 x 4						for balls "MAX" stands for
6801 2RS	188	5.6	12 x 21 x 5	6801 2RS MAX	286	5.8	12 x 21 x 5		Maximum Balls They have
6901 2RS	318	10.4	12 x 24 x 6	6901 2RS MAX	487	10.9	12 x 24 x 6		in general 35% moreload
6001 2RS	500	19.3	12 x 28 x 8	6001 2RS MAX	825	20.8	12 x 28 x 8		capacity than retainer
6201 2RS	684	34.7	12 x 32 x 10						bearings
6702 2RS	99	3.4	15 x 21 x 4						
6802 2RS	219	6.7	15 x 24 x 5	6802 2RS MAX	310	6.8	15 x 24 x 5		"MAX" bearings do not
MR 1526 2RS	390	11.2	15 x 26 x 7	MR 1526 MAX	550	13.0	15 x 26 x 7		spin as smoothly as the
MR 15268 2RS	390	13.0	15 x 26 x 8						retainer bearings and
6902 2RS	434	15.7	15 x 28 x 7	6902 2RS MAX	696	15.9	15 x 28 x 7		should in general be used
6002 2RS	563	29.2	15 x 32 x 9	6002 2RS MAX	893	29.7	15 x 32 x 9		for suspension pivots or
6703 2RS	124	3.8	17 x 23 x 4				17 x 23 x 4		problem areas where
6803 2RS	276	7.3	17 x 26 x 5	6803 2RS MAX	442	7.7	17 x 26 x 5		standard bearings wear
MR 17287 2RS	477	13.6	17 x 28 x 7	MR 17286 MAX	650	13.9	17 x 28 x 6		out prematurely
6903 2RS	477	17.1	17 x 30 x 7	6903 2RS MAX	763	17.6	17 x 30 x 7		
6003 2RS	625	39.6	17 x 35 x 10	6003 2RS MAX	938	39.7	17 x 35 x 10		Static Load capacities are
MR 1937 2RS	688	37.8	19 x 37 x 9						limits well before
MR 190537 2RS	688	37.9	19.05(3/4")x37x9						deformation of the
6704 2RS	136	5.7	20 x 27 x 4						bearing and are
6804 2RS	438	17.2	20 x 32 x 7	6804 2RS MAX	613	18.5	20 x 32 x 7		conservative

ABEC 3 and MAX type Bearings

6904 2RS	688	37.2	20 x 37 x 9						
6004 2RS	1000	67.3	20 x 42 x 12						
MR 21531 2RS	467	24.6	21.5 x 31 x 7	MR 21531 2RS MAX	696	26.1	21.5 x 31 x 7		Always install bearings by pressing on the outer race only into a housing
				MR 2231 2RS MAX	696	12.9	22 x 31 x 7		
MR 22378 2RS	688	27.3	22 x 37 x 8						
MR 22379 2RS	688	31.0	22 x 37 x 9						
MR 2437 2RS	726	31.0	24 x 37 x 7						
6705 2RS	158	6.9	25 x 32 x 4						
6805 2RS	563	20.5	25 x 37 x 7	6805 2RS MAX	788	21.6	25 x 37 x 7		
6905 2RS	813	42.6	25 x 42 x 9						
6005 2RS	813	78.7	25 x 47 x 12						
6706 2RS	181	8.0	30 x 37 x 4						
6806 2RS	650	21.3	30 x 42 x 7	6806 2RS MAX	940	25.7	30 x 42 x 7		
6906 2RS	650	48.3	30 x 47 x 9						
6707 2RS	278	15.3	35 x 44 x 5						
6807 2RS	736	27.3	35 x 47 x 7	6807 2RS MAX	1215	29.9	35 x 47 x 7		
6708 2RS	345	18.6	40 x 49 x 5						
6708 2RS-6W	345	22.8	40 x 49 x 6						
6808 2RS	823	31.3	40 x 52 x 7	6808 2RS MAX	1317	31.7	40 x 52 x 7		
6809 2RS	967	33.1	45 x 58 x 7						
6810 2RS	1070	50.6	50 x 65 x 7						
6811 2RS	1390	81.7	55 x 72 x 9						

Enduro Standard Inch Sizes

				KP 5A MAX	395	9.7	5/16x13/16x9/32"		
				KP 6A MAX	492	9.7	3/8 x 7/8 x 5/16"		
R4 2RS	125	4.4	1/4 x 5/8x.196"						
R6 2RS	304	10.6	3/8 x 7/8 x 9/32"	R6 2RS MAX	486	10.9	3/8 x 7/8 x 9/32"		
R8 2RS	500	21.0	1/2x1 1/8x5/16"	R8 2RS MAX	813	21.6	1/2x1 1/8x5/16"		
R12 2RS	1000	45.2	3/4"x1 5/8x7/16"						

ABEC 3 and MAX type Bearings

R12/22 2RS	1000	51.6	12mmx1 5/8x7/16"
R14 2RS	1111	95.7	7/8x1 7/8x1/2"
1212 2RS	180	3.1	1/2 x 3/4 x 5/32"
1614 2RS	885	28.7	3/8 x 1 1/8" x 3/8"
1616 2RS	885	25.4	1/2x1 1/8x3/8"

Extended Inner Race

688-A 2RS	135	4.7	8 x 16 x 5/8					
				608 2RS MAX-E	500	12.7	8 x 22 x 7/10	Generally, these bearings are for suspension pivots
				6902 2RS MAX-E	696	17.5	15 x 28 x 7/10	
				6903 2RS MAX-E	763	19.0	17 x 30 x 7/10	

Flanged/Extended

				Alternative #				
F 688 2RS	135	10.8	8 x 16/18 x 5					These bearings are custom sizes; please inquire as to their details and specific uses
F 608 2RS	315	12.2	8x22/24x7/8					
608 FE 2RS	315	12.5	8x22/24x7/8	P53-4-102				
608 FE 2RS SP	315	12.0	8x22/24x7/8	P53-101A			Threaded M8x1	
6000 FE 2RS	438	18.5	10x26/28x8/9	P53-4-100				
6000 FE 2RS SI	438	18.5	10x26/28x8/9	B01-4-105			Threaded M10x1	
6900 FE LLB	303	10.8	10x22/24x6					
F 6001 2RS	500	13.1	12x28/32x8					

Angular Contact Series

7900 2RS MAX	485	9.7	10 x 22 x 6	*These are Special Angular Contact Type Bearings to be used
7901 2RS MAX	487	12.1	12 x 24 x 6	
7001 2RS MAX	545	20.3	12 x 28 x 8	

ABEC 3 and MAX type Bearings

				MRA 1526 MAX	605	12.6	15 x 26 x 7	ONLY with a hub
71902 2RS	434	14.3	15 x 28 x 7	7902 2RS MAX	696	15.1	15 x 28 x 7	or component designed
				7903 2RS MAX	763	17.6	17 x 30 x 7	for their usage

Double Row Series

				398 2RS MAX	345	7.1	8 x 18 x10/11	
3001 2RS	1100	32.5	12 x 28 x 12					
3002 2RS	1240	35.0	15 x 32 x 13					
				37802 2RS MAX	1050	14.3	12.7 x 24 x 7/8	Double Row Series
				38802 2RS MAX	1050	14.6	12.7 x 24 x 7/10	Bearings are Angular
3802 2RS	520	10.5	15 x 24 x 7					Contact at 15° with
3802 W LLB	520	10.5	15 x 24 x 10					2 rows of balls opposing
DR 1526 LLB	642	18.5	15 x 26 x 10					each other
3803 2RS-W	520	15.5	17 x 26 x 10					
3903 2RS	1250	25.9	17 x 30 x 10					
3804 2RS	1290	26.0	20 x 32 x 10	3804 2RS RF MAX	1100	26.4	21.5 x 31 x 12	
DR 21531 LLB	845	24.6	21.5 x 31 x 12					
DR 21531 SW	845	25.7	21.5 x 31 x 14					

Headset Bearings

Specialized	Trek	Crane Creek	B-539 2RS MAX	750	14.6	3/4x1 3/16x9/32"	
Number	Number	Number	B-541 2RS MAX	925	19.9	1 1/16x 1.5x9/32"	Generally, these bearings
			B-542 2RS MAX	1115	24.8	5/16x1 3/4x9/32"	are used for headsets or
			B-543 2RS MAX	1465	28.8	1 9/16x2x9/32"	suspension pivots and are
			B-546 2RS MAX	1750	52.9	5/16x2 7/8x9/32"	specific for their use
		HSS 20130K	ACB 36x45 CS BO	1085	19.2	30.2x41x6.5 mm	
		HD 1320 K (1" type	ACB 6805 CC	788	17.7	27.15x35x6.5	
		HD 1446 K (1.325" ty	ACB 6806 CC	940	25.3	37x49x6.5	
MH-P16		HD 1404K (1.5" typ	ACB 6808 CC	1317	24.9	40x52x7x45°	
	290413		ACB 6808 SS	1317	23.4	40x52x7x45°	

ABEC 3 and MAX type Bearings


HSS 20131	ACB 36x45 SS	1085	19.2	30.5x41x6.5 mm
	ACB CH 36x45 SS	1085	16.9	30.2x41x6.5 mm

ABI Industries
6505 San Leandro
Oakland, CA, 94621


ph. (800) 678-8111
fx. (510) 613-8207

info@endurobearings.com

ABEC 5 Bearings

ABEC 5	Static	Weight	Snap Ring	Nylon	Dimensions	Typical	Other
Enduro Bearing	Capacity (Grams)	(Grams)	Seals	Retainer	IDxODxWidth	Application	Details
	lbs						
61801 SRS	188	5.9	X	X	10 x 19 x 7	Hub	All ABEC 5 bearings come with Kyodo Yushi Grease and Grade 5 balls
61802 SRS	219	6.6	X	X	15 x 24 x 5	Hub	
61803 SRS	276	7.2	X	X	17 x 26 x 5	Hub	
61804 SRS	438	17.9	X	X	20 x 32 x 7	Hub	
61805 SRS	563	20.4	X	X	25 x 37 x 7	Hub	
61806 SRS	650	24.6	X	X	30 x 42 x 7	Hub	
61808 SRS	823	30.9	X	X	40 x 52 x 7	Hub	
61900 SRS	303	8.8	X	X	10 x 22 x 6	Hub	
61901 SRS	318	10.7	X	X	12 x 24 x 6	Hub	
61902 SRS	434	15.1	X	X	15 x 28 x 7	Hub	
61903 SRS	477	15.9	X	X	17 x 30 x 7	Hub	
61903/29.5 SRS	477	15.0	X	X	17 x 29.5 x 7	Hub	
61000 SRS	438	16.9	X	X	10 x 26 x 8	Hub	
61001 SRS	500	20.9	X	X	12 x 28 x 8	Hub	
61002 SRS	563	27.4	X	X	15 x 32 x 9	Hub/Pedal	
R 6 SRS	304	11.1	X	X	3/8 x 7/8 x 9/32"	Hub	
MR 1526 LLU/LLB	390	11.2	X	X	15 x 26 x 7	Hub	
MR 22378 LLB	688	27.2	X	X	22 x 37 x 8	Hub	

Ceramic Bearings

ZERØ Ceramic Bearing	Static Capacity	Weight (Grams)	Dimensions IDxODxWidth	Typical Application	Other Details
CØ 6000 VV	438	15.9	10 x 26 x 8 mm	Hub	
CØ 6001 VV	500	17.7	12 x 28 x 8 mm	Hub	
CØ 697 VV	160	4.7	7 x 17 x 5	Derailleur Pulley	
CØ 608 VV	315	10.1	8 x 22 x 8 mm	Hub	
CØ 688 VV	135	3.1	8 x 16 x 5 mm	Hub	
CØ 696 VV	92	2.8	6 x 15 x 5 mm	Hub	
CØ 699 VV	245	6.5	9 x 20 x 6 mm	Hub	
CØ 6702 VV	99	3.2	15 x 21 x 4 mm	DT Hub	
CØ 6801 VV	188	5.3	12 x 21 x 5 mm	Hub	
CØ 6802 VV	219	6.4	15 x 24 x 5 mm	Hub	
CØ 6803 VV	276	6.9	17 x 26 x 5 mm	Hub	CERBEC USA Grade 3 Balls
CØ 6804 VV	438	15.5	20 x 32 x 7 mm	Hub	
CØ 6805 VV	563	18.7	25 x 37 x 7 mm	Hub, BB	
CØ 6805N VV	563	16.7	25 x 37 x 6 mm	Hub, BB	
CØ 6806 VV	650	20.2	30 x 42 x 7 mm	Hub, BB	Silicone VV type seals
CØ 6808 VV	650	29.2	40 x 52 x 7 mm	Hub, BB	
CØ 6900 VV	303	8.3	12 x 22 x 6 mm	Hub	Magnetite Rust Proof Finish
CØ 6901 VV	318	9.8	12 x 24 x 6 mm	Hub	
CØ 6902 VV	434	13.9	15 x 28 x 7 mm	Hub	
CØ 6903 VV	477	14.5	17 x 30 x 7 mm	Hub	
CØ MR 1526 VV	390	10.8	15 x 26 x 7 mm	Hub	Nylon Retainer
CØ MR 15268 VV	390	10.8	15 x 26 x 8 mm	Reynolds Hub	
CØ MR 2437 VV	726	18.9	24 x 37 x 7 mm	BB	
CØ R 6 VV	304	9.2	3/8 x 7/8 x 9/32"	Hub	

Ceramic Bearings

New! Available Now For Approved Installers
Enduro Full Ceramic Sealed Bearing Distributor Pricing*

Full Ceramic Bearing	Static Capacity	Weight (Grams)	Dimensions IDxODxWidth	Typical Application	Other Details
CR 6000 SiRS	438	7.7	10 x 26 x 7/8 mm	Hub	Silicone 70 Sealed one side
CR 6001 SiRS	500	8.6	12 x 28 x 7/8 mm	Hub	
CR 608 SiRS	315	4.8	8 x 22 x 7/8 mm	Hub	DuPont Krytox grease; G - 3 balls
CR 6801 SiRS	188	2.3	12 x 21 x 4/5 mm	Hub	Si3N4 Grade 3 Balls ABEC 5 Si3N4 Races
CR 6802 SiRS	219	2.8	15 x 24 x 4/5 mm	Hub	
CR 6803 SiRS	276	3.1	17 x 26 x 4/5 mm	Hub	
CR 6805 SiRS	563	8.7	25 x 37 x 6/7 mm	Hub, BB	PTFE Retainer
CR 6901 SiRS	318	4.2	12 x 24 x 5/6 mm	Hub	
CR 6902 SiRS	434	6.2	15 x 28 x 6/7 mm	Hub	
CR 6903 SiRS	477	7.0	17 x 30 x 6/7 mm	Hub	
CR MR 1526 SiRS	390	5.1	15 x 26 x 6/7 mm	Hub	
CR R 6 SiRS	304	4.5	3/8 x 7/8 x 9/32"	Hub	

***All Full Ceramic bearings require special tools and care for installation;
 Consumer Installation will void any warranty**

Ceramic Bearings

Enduro Ceramic Hybrid ABEC 5 Bearing Distributor Pricing

Ceramic Hybrid Bearing	Static Capacity	Weight (Grams)	Dimensions IDxODxWidth	Typical Application	Other Details
CH 6800 LLB	172	4.5	10 x 19 x 5	Hub	Kyodo Yushi PS-2 grease; G - 5 balls
CH 63800 LLB	172	6.4	10 x 19 x 7	Hub	
CH 6801 LLB	188	5.3	12 x 21 x 5	Hub	Si3N4 Grade 5 Balls ABEC 5 level precision
CH 6802 LLB	219	6.4	15 x 24 x 5	Hub	
CH 6803 LLB	276	6.9	17 x 26 x 5	Hub	
CH 6804 LLB	438	15.5	20 x 32 x 7	Hub	
CH 6805 LLB	563	18.7	25 x 37 x 7	Hub, BB	Nylon Retainer
CH 6805N LLB	563	16.7	25 x 37 x 6	Campy, Shim BB	
CH 6806 LLB	650	20.2	30 x 42 x 7	Hub, BB	
CH 6807 LLB	736	25.1	35 x 47 x 7	Hub, BB	
CH 6808 LLB	650	29.2	40 x 52 x 7	Hub, BB	
CH 6900 LLB	303	8.3	10 x 22 x 6	Hub	
CH 6901 LLB	318	9.8	12 x 24 x 6	Hub	
CH 6902 LLB	434	13.9	15 x 28 x 7	Hub	
CH 6903 LLB	477	14.5	17 x 30 x 7	Hub	
CH 6903 LLB/29.5	477	13.3	17 x 29.5 x 7	Hub	
CH 6904 LLB	688	31.1	20 x 37 x 9	Hub	
CH 686 LLB	75	2.4	6 x 13 x 5	Pedal	
CH 626 LLB	191	6.9	6 x 19 x 6	Derailleur Pulley	
CH 697 LLB	160	4.7	7 x 17 x 5	Derailleur Pulley	
CH 607 LLB	236	6.6	7 x 19 x 6	Derailleur Pulley	
CH 688 LLB	135	3.1	8 x 16 x 5	Hub	
CH 608 LLB	315	10.1	8 x 22 x 7	Hub	
CH 699 LLB	245	6.5	9 x 20 x 6	Hub	
CH 609 LLB	580	14.5	9 x 24 x 7	Hub	
CH 6000 LLB	438	15.9	10 x 26 x 8	Hub	
CH 6001 LLB	500	17.7	12 x 28 x 8	Hub	

Ceramic Bearings

CH MR1526 LLB	390	10.8	15 x 26 x 7	Hub
CH MR 17287 LLB	477	13.0	17 x 28 x 7	hub
CH MR2437 LLB	726	18.9	24 x 37 x 7	BB
CH MR 240737 LLB	726	18.9	24.07 x 37 x 7	BB
CH R 4 LLB	125	4.1	1/4 x 5/8x.196"	Hub
CH R 6 LLB	304	9.2	3/8 x 7/8 x 9/32"	Hub
CH R 8 LLB	500	18.1	1/2x1 1/8x5/16"	Hub
CH 3803 LLB-W	552	14.6	17 x 26 x 10	Hub

Drivetrain Components

NEW XD-15 Bottom Brackets Available NOW!!

XD-15

- The only Bottom Bracket to come with a one year warranty
- 100% USA made with aircraft grade metals
- Longer life span than most frames on the market
- The only angular contact BB with 3/16" balls
- Nitrogen infused steel for longer life
- 3.5 time more rust resistant than stainless steel
- Lighter than any Shimano, Sram or FSA BB on the market
- Available for road or mountain applications



<u>Part Number</u>	<u>Model</u>	<u>Shell</u>	<u>Spindle</u>	<u>Type</u>	<u>g</u>
BKC-0550	XD-15 BB Red Road	68	Shim/Sram	XD-15	101.00
BKC-0555	XD-15 BB Red MTB	73	Shim/Sram	XD-15	101.00
BKC-0560	XD-15 BB Black Road	68	Shim/Sram	XD-15	101.00
BKC-0565	XD-15 BB Black MTB	73	Shim/Sram	XD-15	101.00

BB30

- Contains Two Bearings and Two Silicon seals, and wave washer.

<u>Part Number</u>	<u>Model</u>	<u>Shell</u>	<u>Spindle</u>	<u>Type</u>	<u>g</u>
BKC-02346	Zerø Road	BB30	BB30	Ceramic	45.42
BKC-0090	Hybrid Road	BB30	BB30	Ceramic	45.42
BK-5127	Steel	BB30	BB30	Steel	54.20



BB30 Adaptor

- Allows you to use any standard crank set (24mm spindle) on BB30 frames
- Comes with Adaptor and 4 different levels of bearings
- Road or Mountain Compatible

<u>Part Number</u>	<u>Model</u>	<u>Shell</u>	<u>Spindle</u>	<u>Type</u>	<u>g</u>
--------------------	--------------	--------------	----------------	-------------	----------

Drivetrain Components

<u>Road</u>					
BKCØ-0500	Zerø	BB30	Shimano	Ceramic	90.00
BKC-0500	Hybrid	BB30	Shimano	Ceramic	90.00
BK-5830	Steel ABEC5	BB30	Shimano	Steel	98.80
BK-5820	Steel ABEC3	BB30	Shimano	Steel	98.80

<u>Mountain</u>					
BKCØ-0505	Zerø	BB30	Shimano	Ceramic	91.50
BKC-0505	Hybrid	BB30	Shimano	Ceramic	91.50
BK-5835	Steel ABEC5	BB30	Shimano	Steel	100.30
BK-5825	Steel ABEC3	BB30	Shimano	Steel	100.30



BB30 External Cups

-Fits BB 30 crank sets with external cups

<u>Part Number</u>	<u>Model</u>	<u>Shell</u>	<u>Spindle</u>	<u>Type</u>	<u>g</u>
	Zerø Ceramic	68	BB30	Ceramic	75.60
	Ceramic Hybrid	68	BB30	Ceramic	75.60

BB90

-Contains 2 Bearings and 2 Seals

-Fits all Road or Mountain Bikes with BB90 shell

<u>Part Number</u>	<u>Model</u>	<u>Shell</u>	<u>Spindle</u>	<u>Type</u>	<u>g</u>
BKCØ-0436	Zerø Ceramic	BB90	Shimano	Ceramic	42.48
BKC-0225	Ceramic Hybrid	BB90	Shimano	Ceramic	42.48
BK-5410	Steel Road	BB90	Shimano	Steel	49.82
BKC-02340	Zerø Ceramic	BB90	SRAM	Ceramic	45.79
BKC-0227	Ceramic Hybrid	BB90	SRAM	Ceramic	45.79
BK-5412	Steel Road	BB90	SRAM	Steel	53.13



BB 86

-Cups are machined from delrin to prevent the metal on metal noise

-Kit includes two cups, two bearings, and all seals needed

Drivetrain Components

-Fits all Road frames with Press in bottom bracket

<u>Part Number</u>	<u>Model</u>	<u>Shell</u>	<u>Spindle</u>	<u>Type</u>	<u>g</u>
BKC-02316	Zerø Ceramic	BB 86	Shimano	Ceramic	54.58
BKC-02312	Ceramic Hybrid	BB 86	Shimano	Ceramic	54.58
BKC-02317	Zerø Ceramic	BB 86	SRAM	Ceramic	
BKC-02313	Ceramic Hybrid	BB 86	SRAM	Ceramic	



BB92

-Cups are machined from delrin to prevent the metal on metal noise

-Kit includes two cups, two bearings, and all seals needed

-Fits all Road frames with Press in bottom bracket

<u>Part Number</u>	<u>Model</u>	<u>Shell</u>	<u>Spindle</u>	<u>Type</u>	<u>g</u>
BKC-02314	Zerø Ceramic	BB 92	Shimano	Ceramic	65.00
BKC-02310	Ceramic Hybrid	BB 92	Shimano	Ceramic	65.00
BKC-02318	Zerø Ceramic	BB 92	SRAM	Ceramic	68.41
BKC-02311	Ceramic Hybrid	BB 92	SRAM	Ceramic	68.41



External Bottom Bracket

-These come with Zerø bearings and fit all English threaded frame

-Compatible Shimano, Sram or any similar style crank set

-Available in Mountain or Road

-Included 2 USA made cups, bearings seals and center sleeve

<u>Part Number</u>	<u>Model</u>	<u>Shell</u>	<u>Spindle</u>	<u>Type</u>	<u>g</u>
BKC-02351	Zerø Road	68	Shimano	Red	100.60
BKC-02326	Zerø Road	68	Shimano	Blue	100.60
BKC-02376	Zerø Road	68	Shimano	Gold	100.60
BKC-02381	Zerø Road	68	Shimano	Black	100.60
BKC-02353	Zerø Road	68	Sram	Red	106.86

Drivetrain Components

BKC-02328	Zerø Road	68	Sram	Blue	106.86
BKC-02378	Zerø Road	68	Sram	Gold	106.86
BKC-02383	Zerø Road	68	Sram	Black	100.60
BKC-02350	Zerø Mountain	73	Shimano	Red	104.55
BKC-02325	Zerø Mountain	73	Shimano	Blue	104.55
BKC-02375	Zerø Mountain	73	Shimano	Gold	104.55
BKC-02380	Zerø Mountain	73	Shimano	Black	104.55
BKC-02352	Zerø Mountain	73	Sram	Red	110.82
BKC-02327	Zerø Mountain	73	Sram	Blue	110.82
BKC-02377	Zerø Mountain	73	Sram	Gold	110.82
BKC-02382	Zerø Mountain	73	Sram	Black	104.55

Outboard kits

- Replacement bearings and seals for Bottom Brackets with outboard cups.
- Includes two bearings and seals
- Requires BRT-001 to remove and install bearings in the cups
- Compatible with all manufactures outboard cup systems

<u>Part Number</u>	<u>Model</u>	<u>Speed</u>	<u>Derailer</u>	<u>Color</u>	<u>g</u>
BK-5410	Steel	9 or 10	Shimano	Road	49.82
BK-5412	Steel	9 or 10	SRAM	Road	53.13
BK-5413	Steel	9 or 10	Shimano	Mountain	49.82
BK-5414	Steel	9 or 10	SRAM	Mountain	53.13
BKC-02335	Zerø Ceramic	9 or 10	Shimano	RD/ MTN	42.48
BKC-02340	Zerø Ceramic	9 or 10	SRAM	RD/ MTN	45.79
BKC-02345	Zerø Ceramic	9, 10 or 11	Campy	Road	33.45
BKC-0225	Ceramic Hybrid	9 or 10	Shimano	RD/ MTN	42.48
BKC-0227	Ceramic Hybrid	9 or 10	SRAM	RD/ MTN	45.79
BKC-0226	Ceramic Hybrid	9 or 10	FSA	RD/ MTN	42.48
BKC-0060	Ceramic Hybrid	9, 10 or 11	Campy	Road	33.45

Note: Mountain Versions come with black oxide coatings for rust precention

Drivetrain Components

Jockey Wheels

- Machned Delrin For percise cut outs and reduced weight
- No float, precision machined teeth
- Enduro Zerø Ceramic bearings

<u>Part Number</u>	<u>Model</u>	<u>Speed</u>	<u>Derailer</u>	<u>Color</u>	<u>g</u>
BKCJ-0105	Zerø Ceramic	9 or 10	Shimano	BLUE	8.70
BKCJ-0125	Zerø Ceramic	9 or 10	Shimano	RED	8.70
BKCJ-0135	Zerø Ceramic	9 or 10	Shimano	GOLD	8.70
BKCJ-0165	Zerø Ceramic	9 or 10	Shimano	BLACK	8.70
BKCJ-0110	Zerø Ceramic	9 or 10	SRAM	BLUE	8.70
BKCJ-0130	Zerø Ceramic	9 or 10	SRAM	RED	8.70
BKCJ-0145	Zerø Ceramic	11	Campy	BLUE	8.70
BKCJ-0150	Zerø Ceramic	11	Campy	RED	8.70
BKCJ-0160	Zerø Ceramic	11	Campy	GOLD	8.70
BKCJ-0100	Zerø Ceramic	10	Campy	BLUE	8.70
BKCJ-0120	Zerø Ceramic	10	Campy	RED	8.70

Headset Bearing Kit

BK-5000	36x45 Stainless Drop In	440 C Stainless Steel Bearings
BKC-0000	36x45 Ceramic Drop In	Ceramic/Stainless Steel Bearings
BK-5687	Trek Madonne Headset Bearings	Stainless Steel Headset Bearings
BK-5112	Cane Creek 1.5" Headset Bearings	Cane Creek HSS 6011

Suspension Kits

Enduro MAX Rear Suspension Bearing Kits

(note: suspension kits no longer include a puller)

-All kits contain MAX type bearings for increased life

-More kits available upon request



<u>Part #</u>	<u>Model</u>	<u>Units</u>
BK-5075	BMC Fourstroke/Trailfox Kit	8 bearings
BK-5120	Cannondale Prophet, Rush Kit	2 MAX bearings
BK-5123	Commencal Meta 4 Kit	10 MAX Bearings
BK-5140	Cove G-Spot Kit	8 MAX Bearings
BK-5145	Cove Hustler Kit	10 MAX Bearings
BK-5150	Decathlon Rockrider Kit	5 MAX Bearings
BK-5240	Ellsworth Truth, ID, Moment, Epiphany Kit	8 MAX bearings
BK-5241	Ellsworth Joker, Iris Kit	2 MAX bearings
BK-5242	Foes Fly 2002 Kit	12 MAX Bearings
BK-5280	Giant AC Bearing Kit	8 MAX bearings
BK-5285	Giant ATX 1 & 2 Kits	8 MAX bearings
BK-5295	Giant Faith, Glory Kit	8 MAX bearings
BK-5243	Giant Trance, Reign, Kits	8 MAX bearings
BK-5231	Giant Anthem Kit	8 MAX bearings
BK-5238	Giant NRS 2004/05 Kit	8 MAX bearings
BK-5290	Giant DH Team 2002/03 Kit	8 MAX bearings
BK-5275	Giant VT 2003 Kit	8 MAX bearings

Suspension Kits

BK-5270	Giant VT 2004/05 Kit	8 MAX bearings
BK-5248	Giant Warp Kit	2 MAX Bearings
BK-5246	Giant Trance 08+	10 MAX Bearings
BK-5244	Giant Reign X Kit	8 MAX bearings
BK-5254	Haro XLS, Extreme Kit	2 MAX bearings
BK-5268	Intense 5.5 Kit, 2004 + Spider Kit	8 MAX bearings
BK-5263	Intense 2003 Spider Kit	8 MAX bearings
BK-5273	Intense M1 Bearing Kit	8 MAX bearings
BK-5293	Intense Uzzi 2000+, M3 Bearing Kit	8 MAX bearings
BK-5294	Intense Tracer, 1998/99 Uzzi Kit	8 MAX bearings
BK-5298	Iron Horse Hollowpoint	8 MAX bearings
BK-5301	Iron Horse MKIII Kit	8 MAX bearings
BK-5302	Iron Horse Sunday DW-link Kit	8 MAX bearings
BK-5303	Iron Horse 7 Point 2005 Kit	8 MAX bearings
BK-5304	Iron Horse Azure	8 MAX bearings
BK-5305	Jamis Dakar XC, XLT 2005 Kit	8 MAX bearings
BK-5306	Jamis Daker XC, XLT 2004 Kit	8 MAX bearings
BK-5330	Kona Kikapu Kit	6 MAX bearings
BK-5333	Lenzsport Behemoth Kit	6 MAX bearings
BK-5405	Norco Team DH, Six Kit	8 MAX bearings
BK-5337	Maverick Monolink Kit	4 MAX bearings
BK-5338	Merida Mission Carbon Team Kit	6 MAX bearings
BK-5339	Niner R.I.P. 9 Kit	8 MAX bearings
BK-5470	Rocky Mountain ETSX Kit	4 MAX bearings

Suspension Kits

BK-5465	Rocky Mountain 3D Link Kit	6 MAX bearings
BK-5480	Rocky Mountain Switch Kit	6 MAX bearings
BK-5485	Rocky Mountain Thrustlink Kit	6 MAX bearings
BK-5520	Santa Cruz BLUR Bearing Kit	8 MAX bearings
BK-5535	Santa Cruz Nomad Bearing Kit	8 MAX bearings
BK-5530	Santa Cruz VP Free, V10 (New) Bearing Kit	8 MAX bearings
BK-5525	Santa Cruz V10 "Classic" Bearing Kit	14 MAX bearings
BK-5515	Santa Cruz Bullet, Heckler, Super 8, Bearing Kit	2 MAX bearings
BK-5540	Santa Cruz Superlite, 00-01 Heckler Bearing Kit	2 MAX bearings
BK-5543	Scott Genius Kit	8 MAX bearings
BK-5555	Specialized 2006 Stumpjumper 130mm & 2007 120mm Kit	12 MAX bearings
BK-5550	Specialized Big Hit 2000/01 Kit	10 MAX bearings
BK-5560	Specialized Big Hit 2004/05 Kit	10 MAX bearings
BK-5565	Specialized Big Hit 2006 Kit	10 MAX bearings
BK-5570	Specialized Demo 2004/06 Kit	12 MAX bearings
BK-5575	Specialized Enduro 2000/02 Kit	10 MAX bearings
BK-5580	Specialized Enduro 2002/05 Kit	10 MAX bearings
BK-5545	Specialized Enduro 2004/06 FSR XC Kit	10 MAX bearings
BK-5585	Specialized Enduro 2005/06 120 mm Kit	10 MAX bearings
BK-5590	Specialized 2005/06 150 mm Kit	10 MAX bearings
BK-5600	Specialized Rockhopper Comp Kit	10 MAX bearings
BK-5610	Specialized Stumpjumper FSR 2001/03 Kit	10 MAX bearings
BK-5615	Specialized Stumpjumper FSR 2004/05 Kit	10 MAX bearings
BK-5605	Specialized Stumpjumper FSR 2006/07 120, 130 mm Kit	12 MAX bearings
BK-5595	Specialized Epic 2003/06 Kit	8 MAX bearings
BK-5670	Titus Motolite/Racer X Kit	8 MAX bearings
BK-5675	Titus Switchblade Kit	8 MAX bearings
BK-5683	Transition Covert Kit	8 MAX bearings
BK-5685	Trek Liquid/Fuel 2005 Kit	6 MAX bearings

Suspension Kits

BK-5710	Turner DHR + others Kit	2 MAX, 2 needle bearings
BK-5715	Ventana El Chamuco Std Kit	4 MAX bearings
BK-5725	Ventana El Chamuco Super Link Kit	8 MAX bearings
BK-5720	Ventana El Saltamontes + X5 Kit	10 MAX bearings
BK-5780	Yeti AS-R 2002 Bearing Kit	2 MAX bearings
BK-5775	Yeti AS-R 2003+ Bearing Kit	8 MAX bearings
BK-5785	Yeti AS-X Bearing Kit	8 MAX bearings
BK-5760	Yeti 303 Bearing Kit	10 MAX bearings
BK-5770	Yeti 575 Bearing Kit	10 MAX bearings
BK-5765	Yeti 4X Bearing Kit	8 MAX bearings
BK-5787	Yeti Kokopelli Bearing Kit	2 MAX bearings

Wheel and Pedal Kits

Wheel Bearing Kits

Enduro Steel and Ceramic Wheels kits

We now offer select Zerø Ceramic wheel kits

- These Kits come with our top of the line Zerø Ceramic Bearings
- More Zerø Kits are available upon request
- Part numbers for hybrid and Zerø kits are the same with an added Ø after the BKC

BKCØ-0115	D/T Swiss 240 Standard Road Ceramic
BKCØ-0200	Mavic Ksyrium ES, SL Silver, Helium, Carb, X-Max Ceramic
BKCØ-0215	Mavic Cosmic, Classic, Carbone Ceramic
BKCØ-0390	Zipp 2009-present Ceramic Balls

Wheel kits with Ceramic Hybrid bearings

- All Ceramic Kits come with our CH series Ceramic Bearings
- All kits come with a puller for removing the old bearings

BK-5005	American Classic 130 Enduro
BKC-0005	American Classic 130 Ceramic
BK-5010	American Classic 350 Enduro
BKC-0010	American Classic 350 Ceramic
BK-5015	American Classic 420 New, Carbon 38, 58 Enduro
BKC-0015	American Classic 420 New Carbon 38, 58 Ceramic
BK-5020	American Classic 420 Old Enduro
BKC-0020	American Classic 420 Old Ceramic
BK-5080	Bontrager comp, Pro Enduro
BKC-0045	Bontrager comp, Pro Ceramic
BK-5085	Bontrager Race, Racelite Enduro
BKC-0050	Bontrager Race, Racelite Ceramic
BK-5090	Bontrager X, XXX Lite, Aeoleus Enduro
BKC-0040	Bontrager X, XXX Lite, Aeoleus Ceramic
BK-5081	Bont Rhythm Elite 07, RaceLite CL Disk 05-07 & 6Bolt
BKC-0044	Bont Rhythm Elite 07, RaceLite CL Disk 05-07 & 6Bolt



Units

6 bearings, 1 tool
5 bearings, 1 tool
5 bearings, 1 tool
6 Bearings, 1 tool

Units

7 Bearings, 1 tool
7 Bearings, 1 tool
6 Bearings, 1 tool
6 Bearings, 1 tool
6 Bearings, 1 tool
6 Bearings, 1 tool
6 Bearings, 1 tool
6 Bearings, 1 tool
6 bearings, 1 tool
6 bearings, 1 tool
6 bearings, 1 tool
6 bearings, 1 tool
6 bearings, 1 tool
6 bearings, 1 tool

Wheel and Pedal Kits

BK-5082	Bont King Earl 06-07 Enduro	6 bearings, 1 tool
BKC-0046	Bont King Earl 06-07 Ceramic	6 bearings, 1 tool
BK-5083	Bont Big Earl 05-07 Enduro	6 bearings, 1 tool
BKC-0047	Bont Big Earl 05-07 Ceramic	6 bearings, 1 tool
BK-5084	Bont Earl 05-07 Enduro	6 bearings, 1 tool
BKC-0048	Bont Earl 05-07 Ceramic	6 bearings, 1 tool
BK-5086	Bont Race Xlite Centerlock Disk 05-07 Enduro	6 bearings, 1 tool
BKC-0049	Bont Race Xlite Centerlock Disk 05-07 Ceramic	6 bearings, 1 tool
BK-5087	Bont RaceLite 00 Enduro	6 bearings, 1 tool
BKC-0051	Bont RaceLite 00 Ceramic	6 bearings, 1 tool
BK-5090	Bont Race Xlite 03-07, Aeolus 07, XXX Lite, Xlite Aero Carbon	6 bearings, 1 tool
BKC-0043	Bont Race Xlite 03-07, Aeolus 07, XXX Lite, Xlite Aero Carbon	6 bearings, 1 tool
BK-5089	Bont Race SS (single speed) 05-07 Enduro	6 bearings, 1 tool
BKC-0052	Bont Race SS (single speed) 05-07 Ceramic	6 bearings, 1 tool
BK-5091	Bont Race 02-07 Enduro	6 bearings, 1 tool
BKC-0053	Bont Race 02-07 Ceramic	6 bearings, 1 tool
BK-5092	Bont Race Modified 00-01, Urraco 00-01 Enduro	6 bearings, 1 tool
BKC-0054	Bont Race Modified 00-01, Urraco 00-01 Ceramic	6 bearings, 1 tool
BK-5093	Bont Classics 07 Enduro	6 bearings, 1 tool
BKC-0056	Bont Classics 07 Ceramic	6 bearings, 1 tool
BK-5094	Bont Race Lite (flangeless) 06-07 Enduro	6 bearings, 1 tool
BKC-0057	Bont Race Lite (flangeless) 06-07 Ceramic	6 bearings, 1 tool
BK-5096	Bont RaceLite Aero 06-07, All Track, Aero & Carbon 04-07	6 bearings, 1 tool
BKC-0058	Bont RaceLite Aero 06-07, All Track, Aero & Carbon 04-07	6 bearings, 1 tool
BK-5097	Bont Vector Pro & Carbon 00 Enduro	6 bearings, 1 tool
BKC-0059	Bont Vector Pro & Carbon 00 Ceramic	6 bearings, 1 tool
BK-5095	Campagnola Record, Chorus, Shamal 8-9 Enduro	4 bearings, 1 tool
BKC-0055	Campagnola Record, Chorus, Shamal 8-9 Ceramic	4 bearings, 1 tool
BK-5110	Cane Creek Crono Enduro	4 bearings, 20 balls, 1 tool
BKC-0080	Cane Creek Crono Ceramic	4 bearings, 20 balls, 1 tool
BK-5105	Cane Creek Aros, Volos, Zonos, Duro Enduro	6 bearings, 1 tool
BKC-0075	Cane Creek Aros, Volos, Zonos, Duro Ceramic	6 bearings, 1 tool
BK-5115	Cane Creek Stratos, Terros Enduro	4 bearings, 1 tool

Wheel and Pedal Kits

BKC-0085	Cane Creek Strattos, Terros Ceramic	4 bearings, 1 tool
BK-5157	Crank Brothers Cobalt/ Iodine Enduro	6 beaings, 1 tool
BKC-0083	Crank Brothers Cobalt/ Iodine Ceramic	6 beaings, 1 tool
BK-5175	D/T Swiss 240 Radial Enduro	4 bearings, 1 tool
BKC-0110	D/T Swiss 240 Radial Ceramic	4 bearings, 1 tool
BK-5180	D/T Swiss Standard Road Enduro	6 bearings, 1 tool
BKC-0115	D/T Swiss 240 Standard Road Ceramic	6 bearings, 1 tool
BK-5165	D/T Swiss 240, 240S Mountain Enduro	6 bearings, 1 tool
BKC-0105	D/T Swiss 240, 240S Mountain Ceramic	6 bearings, 1 tool
BK-5170	D/T Swiss 240 Disc OS Enduro	6 bearings, 1 tool
BKC-0100	D/T Swiss 240 Disc OS Ceramic	6 bearings, 1 tool
BK-5195	D/T Swiss 340 Road Enduro	6 bearings, 1 tool
BKC-0125	D/T Swiss 340 Road Ceramic	6 bearings, 1 tool
BK-5190	D/T Swiss 340 Disc Enduro	4 bearings, 1 tool
BKC-0120	D/T Swiss 340 Disc Mountain Ceramic	4 bearings, 1 tool
BK-5200	D/T Swiss 440 Disc Mountain Enduro	4 bearings, 1 tool
BKC-0130	D/T Swiss 440 Disc Ceramic	4 bearings, 1 tool
BK-5215	D/T Swiss Onyx Mountain Enduro	5 bearings, 1 tool
BKC-0135	D/T Swiss Onyx Mountain Ceramic	5 bearings, 1 tool
BK-5210	D/T Swiss Onyx Road Enduro	5 bearings, 1 tool
BKC-0140	D/T Swiss Onyx Road Ceramic	5 bearings, 1 tool
BK-5235	Easton/ Velomax Asent/Orion/Tempest, EA 90 Enduro	6 bearings, 1 tool
BKC-0160	Easton/ Velomax Asent/Orion/Tempest, EA 90 Ceramic	6 bearings, 1 tool
BK-5225	Easton/ Velomax, Vista S, Circuit S Enduro	4 Bearings, 1 tool
BKC-0155	Easton/ Velomax, Vista S, Circuit S Ceramic	4 Bearings, 1 tool
BK-5230	Easton/ Velomax XC One Enduro	7 Bearings, 1 tool
BKC-0150	Easton/ Velomax XC One Ceramic	7 Bearings, 1 tool
BK-5250	FSA RD 220C Enduro	4 Bearings , 1 tool
BKC-0165	FSA RD 220C Ceramic	4 Bearings , 1 tool
BK-5255	FSA RD 220S Enduro	4 Bearings , 1 tool
BKC-0170	FSA RD 220S Ceramic	4 Bearings , 1 tool

Wheel and Pedal Kits

BK-5260	FSA Rd 400c,400s,488c,488s,600 all, Enduro	4 bearings, 1 tool
BKC-0175	FSA Rd 400c,400s,488c,488s,600 all, Ceramic	4 bearings, 1 tool
BK-5265	FSA RD 800S Enduro	4 bearings, 1 tool
BKC-0180	FSA RD 800S Ceramic	4 bearings , 1 tool
BKC-0189	Fulcrum All	2 bearings, 60 balls, 1 tool
BK-5253	Hed Tri Spoke, Lentic, Sonic Enduro	4 Bearings 20 Balls, 1 tool
BKC-0185	Hed Tri Spoke, Lentic, Sonic Ceramic	4 Bearings 20 Balls, 1 tool
BK-5258	Hed Alps, Stinger, Bastogne, Jet Enduro	6 Bearings 1 tool
BKC-0190	Hed Alps, Stinger, Bastogne, Jet Ceramic	6 Bearings, 1 tool
BK-5259	Industry Nine MTB ABEC 5 bearings	7 bearings, 1 tool
BKC-0171	Insustry Nine MTB Ceramic	7 bearings, 1 tool
BK-5261	Industry Nine "Enduro" ABEC 5 bearings	7 bearings, 1 tool
BKC-0172	Insustry Nine "Enduro" Ceramic	7 bearings, 1 tool
BK-5340	Mavic Comet Enduro	5 bearings, 1 tool
BKC-0213	Mavic Comet Ceramic	5 bearings, 1 tool
BK-5345	Mavic Crossmax Enduro	6 bearings, 1 tool
BKC-0217	Mavic Crossmax Ceramic	6 bearings, 1 tool
BK-5365	Mavic Cosmic, Classic, Carbone Enduro	5 bearings, 1 tool
BKC-0215	Mavic Cosmic, Classic, Carbone Ceramic	5 bearings, 1 tool
BK-5360	Mavic Ksyrium ES, SL Silver, Helium, Carbonne, New X-Max Enduro	5 bearings, 1 tool
BKC-0200	Mavic Ksyrium ES, SL Silver, Helium, Carb, X-Max Ceramic	5 bearings, 1 tool
BK-5350	Mavic Ksyrium SL Black, older Helium Enduro	5 bearings, 1 tool
BKC-0210	Mavic Ksyrium SL Black, older Helium Ceramic Balls	5 bearings, 1 tool
BK-5355	Mavic Ksyrium Elite/Equipe Black Enduro	5 bearings, 1 tool
BKC-0205	Mavic Ksyrium Elite/Equipe Black Ceramic Balls	5 bearings, 1 tool
BK-5440	Reynolds Stratus, Solitude Enduro	4 Bearings, 1 tool
BKC-0255	Reynolds Stratus, Solitude Ceramic	4 Bearings, 1 tool
BK-5450	Reynolds 05-06 Shimano Enduro	4 Bearings, 1 tool
BKC-0250	Reynolds 05-06 Shimano Ceramic	4 Bearings, 1 tool
BK-5445	Reynolds 05-06 Campagnolo Enduro	6 bearings, 1 tool

Wheel and Pedal Kits

BKC-0245	Reynolds 05-06 Campagnolo Ceramic	6 Bearings, 1 tool
BK-5490	Rolf Apex, Vigor Enduro	6 Bearings, 1 tool
BKC-0260	Rolf Apex, Vigor Ceramic	6 bearings, 1 tool
BK-5500	Rolf Comp Enduro	4 Bearings, 1 tool
BKC-0270	Rolf Comp Ceramic	4 Bearings, 1 tool
BK-5495	Rolf Pro, Aspin, Echelon, Elan, Pro, Vector Enduro	6 Bearings, 1 tool
BKC-0265	Rolf Pro, Aspin, Echelon, Elan, Pro, Vector Ceramic	6 Bearings, 1 tool
BK-5505	Rolf Sestrierre Enduro	5 bearings, 1 tool
BKC-0275	Rolf Sestrierre Ceramic	5 bearings, 1 tool
BK-5510	Rolf Tempo Enduro	5 bearings, 1 tool
BKC-0280	Rolf Tempo Ceramic	5 bearings, 1 tool
BK-5650	Spinergy SRS, SRX Enduro	4 bearings, 1 tool
BKC-0320	Spinergy SRS, SRX Ceramic	4 bearings, 1 tool
BK-5640	Spinergy SM3, SD3, SR3 Enduro	4 bearings, 1 tool
BKC-0310	Spinergy SM3, SD3, SR3 Ceramic	4 bearings, 1 tool
BK-5655	Spinergy Xaero, Xaerox Lite Enduro	4 bearings, 1 tool
BKC-0325	Spinergy Xaero, Xaerox Lite Ceramic	4 bearings, 1 tool
BK-5660	Spinergy Xclone Race, Xclone Lite Enduro	4 bearings, 1 tool
BKC-0335	Spinergy Xclone Race, Xclone Lite Ceramic	4 bearings, 1 tool
BK-5740	White Industries H1 Enduro	6 Bearings, 1 tool
BKC-0365	White Industries H1 Ceramic	6 Bearings, 1 tool
BK-5745	White Industries LTA, H2 Enduro	7 Bearings, 1 tool
BKC-0370	White Industries LTA, H2 Ceramic	7 Bearings, 1 tool
BK-5795	Zipp 2004 & older Enduro	5 bearings, 1 tool
BKC-0380	Zipp 2004 & older Ceramic	5 bearings, 1 tool
BK-5800	Zipp 2005-2008 Enduro	5 bearings, 1 tool
BKC-0385	Zipp 2005-2008 Ceramic Balls	5 bearings, 1 tool
BK-5810	Zipp 2009-present Enduro	6 Bearings, 1 tool
BKC-0390	Zipp 2009-present Ceramic Balls	6 Bearings, 1 tool

Wheel and Pedal Kits

Loose Ball Bearings

Loose Ball Bearings; Grade 25 Chromium Steel

Units

BK-5037	1/4" (6.350 mm)	100 pcs.
BK-5051	7/32" (5.556 mm)	100 pcs.
BK-5041	3/16" (4.760 mm)	100 pcs.
BK-5049	5/32" (3.969 mm)	100 pcs.
BK-5039	1/8" (3.175 mm)	100 pcs.
BK-5043	3/32" (2.381 mm)	100 pcs.

Loose Ball Bearings; Grade 5 Chromium Steel

Units

BK-5055	1/4" (6.350 mm)	50 pcs.
BK-5065	7/32" (5.556 mm)	50 pcs.
BK-5059	3/16" (4.760 mm)	50 pcs.
BK-5063	5/32" (3.969 mm)	50 pcs.
BK-5057	1/8" (3.175 mm)	50 pcs.
BK-5061	3/32" (2.381 mm)	50 pcs.

Loose Ceramic Balls; Grade 5 Silicon Nitride

Units

BKC-0021	1/4" (6.350 mm)	50 pcs.
BKC-0031	7/32" (5.556 mm)	50 pcs.
BKC-0025	3/16" (4.760 mm)	50 pcs.
BKC-0029	5/32" (3.969 mm)	50 pcs.
BKC-0023	1/8" (3.175 mm)	50 pcs.
BKC-0027	3/32" (2.381 mm)	50 pcs.

CERBEC Ceramic Balls; Grade 3 Silicon Nitride

Units

BKC-0026	3/16" (4.760 mm)	20 pcs.
----------	------------------	---------

Wheel and Pedal Kits

BKC-0030

5/32" (3.969 mm)

20 pcs.

Loose Ceramic Ball Bearing Kits; Grade 5 Silicon Nitride

Units

BKC-0290 Shimano Dura Ace Wheelset

56 balls

BKC-0295 Shimano XTR, XT, 105 Ultegra Wheelset

40 balls

BKC-0055 Campagnolo

80 balls + 2 cartridge bearings

Pedal Kits

Units

BK-5335 Look Pedals Enduro

2 bearings

BKC-0195 Look Pedals Ceramic

2 bearings

BK-5625 Speedplay Pedals Road Enduro

6 bearings

BKC-0305 Speedplay Pedals Road Ceramic

6 bearings

BK-5620 Speedplay Frog Pedals Enduro

4 bearings

BKC-0300 Speedplay Frog Pedals Ceramic

4 bearings

BK-5665 Time Pedals ATAC Kit Enduro

2 bearings, 2 seals

BKC-0340 Time Pedals ATAC Kit Ceramic

2 bearings, 2 seals

Specialty Bearings

Needle	Static	Weight	Dimensions	Typical	Known
Bearing	Capacity	(Grams)	IDxODxWidth	Application	Usage
BA 85 Z	600	4.4	1/2"x11/16"x 5/16"	Pivot	Yeti
B 812 OH	600	12.6	1/2"x11/16"x 3/4"	Pivot	Turner
Fox NB Kit	1150	8.1	8/11x15x12.7/22	Shock Pivot	Fox, Stratos
HK 1010	950	3.3	10 x 14 x 10	Pedal	Speedplay
HK 1012	950	4.0	10 x 14 x 12		
HK 1012 1RS	950	4.0	10 x 14 x 12		
HK 1014 2RS	950	4.9	10 x 14 x 14	Pivot	Cannondale Pivot
HK 1210	1125	4.1	12 x 16 x 10	Pivot, Pedal	
HK 1210 1RS	1125	4.2	12 x 16 x 10	Pivot	
HK 1216 2RS	1535	11.8	12 x 18 x 16	Pivot	
HK 1416 2RS	1620	37.3	14 x 20 x 16	Pivot	
HK 1614 RS	1710	12.0	16 x 22 x 14	Pivot	Rocky Mountain
HK 1712	1850	11.7	17 x 23 x 12	Pivot	

Rod End	Weight	Dimensions	Typical	Known
Bearing	(Grams)	ID x thread	Application	Usage
Gar 6 UK	15.1	6mm x 1	Disc Brake Linkage	
Gar 8 UK	28.8	8mm x 1.24	Disc Brake Linkage	
POSB 4	17.6	1/4"x1/4" x 28tpi	Disc Brake Linkage	Foes
POSB 6	50.4	3/8"x3/8" x 24tpi	Disc Brake Linkage	

Sherical Plane	Weight	Dimensions	Typical	Known
Bushing	(Grams)	IDxODxWidth	Application	Usage
GE 6 EC	17.1	.375" X .812" .405"	Shock Mount	Foes
GE 12 EC	21.1	.5" X .875"X.437"	Shock Mount	
GE 6 UK	4.0	6 x 14 x 6	Shock Mount	
GE 8 UK	27.5	8 x 16 x 8	Shock Mount	
GE 10 UK	10.6	10 x 19 x 9	Shock Mount	
GE 15 UK	26.0	15 x 26 x 12	Shock Mount	

Fork Seals

SKU#	Suspension Fork Replacement Seals	ID x OD x Width Dimensions	ID x OD x Width Dimensions	Qty of Parts	Models Included
FK 6650	Fox 32 Universal Kit	PSW 32x42x8/15	SE 32x42x6.7	2 Wipers, 2 Seals, 2 Foam Rings, 2 crush washers	All Fox 32 mm Forks
FK 6652	Fox 36 Kit	PSW 36x46x8/18	SE 36x46x4	2 Wipers, 2 Seals, 2 Foam Rings, 2 crush washers	All Fox 36 mm Forks
FK 6653	Fox 40 Kit	PSW 40x50x8/15	SE 40x50x5	2 Wipers, 2 Seals	All Fox 40 mm Forks
FK 6603	Manitou 28.6 Scareb	PSW 28.6X37X5/14	SE 28.6x37x4	2 Wipers, 2 Seals	Manitou Skareb
FK 6604	Manitou Mars	PSW 28.6X37X5/14	n/a	2 Wipers	Manitou Mars
FK 6605	Manitou Black	PSW 30x39.4x14	n/a	2 Wipers	Manitou Black
FK 6602	Manitou 30 mm	PSW 30x39.4x14	SE 30x39.2x8/10	2 Wipers, 2 Seals	Manitou Minute, R-Seven, Black
FK 6601	Manitou 32 mm	PSW 32x42x8/15	SE 32x42x7/9	2 Wipers, 4 Seals	Manitou Sherman, Minute, Nixon, Stance
FK 6625	Manitou 34 mm	PSW 34x43.9x14F	SE 34x43x3	2 Wipers, 2 Seals	Not Available Yet*
FK 6606	Marzocchi Bomber	PSW 30x40.2x14	SE 30x40x8/9	2 Wipers, 2 Seals	M-Arch style Forks, All Bombers
FK 6607	Marzocchi Free Ride	PSW 32x44.2x4.6/14	SE 32x42x7/9 T	2 Wipers, 2 Seals	All Free Ride, Dirt Jumper
FK 6608	Marzocchi Shiver DC	PSW 35x47.4.6/16	SE 35x47x10	2 Wipers, 2 Seals	Shiver Dual Crown, 888, 55, 66
FK 6609	Marzocchi Monster T	PSW 40x52.5x7.5/14	SE 40x52x10.5	2 Wipers, 2 Seals	Monster T Product
FK 6614	Rockshox MAG 21	SE 25.4x35x7	n/a	2 Wiper Seals	Rockshox Mag 21
FK 6613	Rockshox 28 mm	PSW 28x37x9/12	SE 28x37x6 TCP	2 Wipers, 2 Seals	All Judy and

Fork Seals

					Sid Product
FK 6610	Rockshox 30 mm	PSW 30x39x14	PS 30x39x6 UI	2 Wipers, 2 Seals	Duke Race, SL, XC, C Psylo Race, SL XC, C
FK 6612	Rockshox 32 mm	PSW 32x42x14F	SE 32x42x6.7 TC	2 Wipers, 2 Seals	Rockshox Reba, Pike, Boxxer
FK 6615	Rockshox 35 mm	PSW 35x45x14F	SE 35x45x7 TC	2 Wipers, 2 Seals	Rockshox Lyrik, Domain
FK 6617	Rockshox 40 mm	PSW 40x50.4x15F	SE 40x50.4x6.5/9	2 Wipers, 2 Seals	Rockshox Totem
FK 6660	Maverick	PSW 32x42x14	SE 32 x 42 x 3	2 Wipers, 2 Seals	Maverick front & rear shock
FK 6620	White Brothers	PSW 32x38.75x8/15	n/a	2 Wiper Seals	White Brothers Forks

Tools

Tools for Working on Bearings

USA made by Sonny's Bike Tools

Bottom Bracket Tools

External BB Tools

BBT-001	X-Drive Cup Tool
BRT-001	X-Drive BB Tool Set
CT-006	Campagnolo Ultra Torque Bearing Removal Tool
CT-007	Campagnolo Ultra Torque Bearing Insall Pilots
CT-001	Cannondale Crank Spider Tool
CT-002	Cap Pin FSA, Cannondale, Zipp
PT-006	Replacement Collet for BRT-001 Tool

Description

Tool for removal and install of any FSA, Shimano, SRAM, Truvative or Enduro Style Outboard Cups

Tool for removal and install of bearings into any standard outboard cups

Tool for removing the bearing from the crank spindle on Campagnolo Cranks

Thes Pilots work with the BRT-005 (Hub Press) to press new bearings onto the Ultra Torque Cranks

This tool allows you to swap out the chain rings on Cannondale cranks by removing the spider

This tool allows you to remove the cap pin on the FSA, Cannondale and Zipp Crank Sets

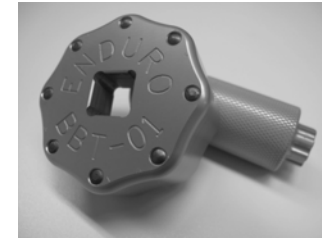
Collet replacement for BB Tool Set

BB30 Tools

BRT-002	BB30 Bottom Bracket Tool
---------	--------------------------

Description

This tool allows you to safely remove and install the 6806 Bearings into any model BB30 Bottom Bracket



BBT-001



BRT-001



BRT-002

Tools

BBT-003 BB30 Cup Removal Tool This tool is for the removal and install of BB30 cups. It comes with an alignment shaft as well

BB90 Tool

Description

BBT-006 BB90 Bottom Bracket Tool This tool works in conjunction with the BBT-005 to press bearings into the BB90 Bottom Brackets. Will work with Shimano and SRAM style bearings from Enduro

Hub and Suspension Pivot Tools

Description

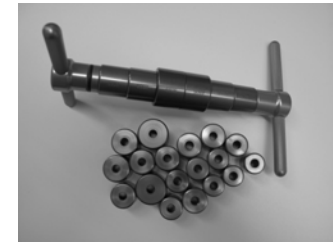
BBT-100 Blind hole Puller Set This Tool set allows you to pull and bearings that are pressed into a housing as found in all hubs and pivots. Work with any bearing with an inside diameter between 8-40mm.

BRT-005 Hub Press Tool set for pressing bearings into Hubs, Pivots or some BB's. Contains 12 bushing to fit all of the major size bearings used in hubs and pivots.

LHT-001 Lefty Hub Pin Tool for Pin Tool for Remove/Replace Lefty Cap on Cannondale Lefty Hubs

BBT-105 V-Type Bearings puller Small Bearing Puller Tool 8-25 mm

**TK EACH SIZE Puller Press Puller Press Tool for Various Bearings



BRT-005

ABI Industries
6505 San Leandro
Oakland, CA, 94621

ph. (800) 678-8111
fx. (510) 613-8207

Tools

info@endurobearings.com